

WHAT'S NEW IN VERSION 27.0 OF THE NAVPAK DISPATCHER - 1st half of 2016

The screenshot shows the NAVPAK Global Airport Search interface. The title bar reads 'NAVPAK® Global Airport Search - Version 26.5 (2nd half of 2015)'. The main window displays the date 'Wednesday, July 29, 2015 [Jul 2015 Data]'. A search field contains 'BED' and a button says 'Click or press Enter to start search'. The time is 'At «BED» it is 3:38 p.m. Daylight Saving Time'. An 'Exit' button is visible. Below is a table of search results:

Title	Result	Title	Result	Title	Result
Airport ID:	KBED <icao> / BED <iata> / BED <faa>	Approach List:	ILS/DME GPS	ATIS:	124.6
Airport Name:	Laurence G Hanscom Field	Best Runway ID:	11/29 7011' / 150' 132' Elev.	CLEARANCE:	121.85
Airport City:	Bedford, Massachusetts, USA	FuelType:	AVGAS JET	GROUND:	121.7
Dist. From City:	NE OF CITY	Lighting:	HIGH	TWR:	118.5
Coordinates:	N42-28.2 / W071-17.3	Airport Of Entry:	With PNR / Customs avail: Yes	CTAF:	118.5
Var. & Arpt type:	16W - Civil airport	Open 24 Hours:	24Hrs (Restrictions) / Civil	UNICOM:	122.95
Int'l Time Zone:	-5.00 / Eastern (DST UTC-4, STD UTC-5)	AirportHours:	H24	PCN:	082FCWT
Observes DST:	Yes / Currently observing DST	ControlTowerHrs:	0700-2300L	Slots Required:	N

NAVPAK's Airport Search screen has been revised and upgraded to present additional kinds of data.

ICAO, IATA, AND FAA CODES NOW DISPLAY IN AIRPORT SEARCH –

Most airports in North America have separate ICAO, IATA, and FAA codes. Now NAVPAK displays all three codes on the Airport Search screen. Entry of any of these codes into the "Type Airport Identifier" field will call all three codes, or however many are available for any given airport. When an IATA code for one airport is the same as the FAA code for another airport, an overlay will display that will allow you to select the airport you are looking for.

NEW DATA ON AIRPORT SEARCH AND SCHEDULER SCREENS –

New data sources have made new airport data available for display on the Airport Search screen. Airport of Entry designation, Airport open hours, and Control Tower hours display. CTAF and UNICOM frequencies display. PCN weight data displays and "Slots Required" are indicated.

FBO EMAIL ADDRESSES DISPLAY IN AIRPORT SEARCH –

New data sources have provided NAVPAK with Email addresses for most FBOs. This data displays on the Airport Search grid, the FBO Details screen, and the FBO Details Preview and Print.

MORE TELEPHONE NUMBER INFORMATION IN AIRPORT SEARCH –

New data sources have provided NAVPAK with data for Telephone After Hours and Toll Free telephone numbers in addition to the Telephone and Fax Number data previously available.

NEW SERVICES AND AMENITIES IN FBO DETAILS GRID –

Using new data sources we have added information to the Airport Search FBO Details grid. Services and Amenities can now be accessed from buttons on the right side of the FBO Details screen include: *Handling, Ramp Services, Passenger Services, Cargo, Business Aviation, Admin and Ops, Fuel Types, and Hotel Services*. This information also displays on the FBO Details Preview and Print options.

EXPANDED CREDIT CARD INFORMATION IN AIRPORT SEARCH –

New data sources have provided greatly expanded FBO Credit Card information, displaying up to 20 Credit Card options available at certain FBOs. Credit Card information is no longer displayed on the Airport Search grid, but is now available in its expanded version on the FBO Details screen and its Preview and Print options.

WHAT'S NEW IN VERSION 27.0 OF THE NAVPAK DISPATCHER - 1st half of 2016

NAVPAK NOW HAS “WHAT YOU SEE IS WHAT YOU GET” TEXT FORMATTING Previous versions of NAVPAK required the entry of formatting codes for setting bold, underline, italics, and a change of fonts or font sizes in Scheduler or Bidder reports. Now you can simply highlight the text you wish to format and click on the **B**, **U**, **I**, **font** or **font-size** buttons, and the text will be formatted on the Passenger or Pilot Notes screen, exactly as it is going to appear in the Preview-and-Print screen. These features are also available in the Bid Attachment and Rich Text Editor.

TAB INDENTING IS NOW ADJUSTABLE Previous versions of NAVPAK permitted tab indenting with wide intervals that were not adjustable. Now the Pilot Note, Passenger Note, and Rich Text File screens feature eight tab “L” symbols that can be moved to accommodate indenting wherever you like on the editing screens, Preview screens, and the printed NAVPAK reports.

FONTS CAN BE CHANGED IN THE SCHEDULER AND BIDDER NOTES – Previous versions of NAVPAK permitted toggling between serif and sans serif fonts. Now, the Scheduler and Bidder reports permit the selection of fonts from a large list of available fonts on your computer. The default font that NAVPAK uses is Arial (sans serif), and the other font we recommend is Times New Roman (serif), but you can use any of the fonts that are available on your computer.

THE PREFERRED FBO FILE IS BACKED-UP AUTOMATICALLY EACH MONTH – There is always a risk of losing FBO markings. To minimize any losses, data will be backed up at the beginning of each calendar month.

Passenger Schedule - Leg notes 112 of 900 characters (maximum leg note length)

Step 1: Select the desired flight leg.

Leg 1: FAR to FAT

Available FBOs {to open click Down-Arrow; to close click Up-Arrow}

Hotels, if you have Hotel Search {to open click Down-Arrow; to close click Up-Arrow}

Arial 10 B I U

Please honor all **restrictions** on *passenger decorum* and interpersonal etiquette.
 This is a Passenger Leg Note. Text can be bold, italics and underlined in the same line
 Catering by Baxter's.

What you see in the Pilot and Passenger Notes screen is what you get in the printed text.

Bermuda Jet SERVICE, INC.

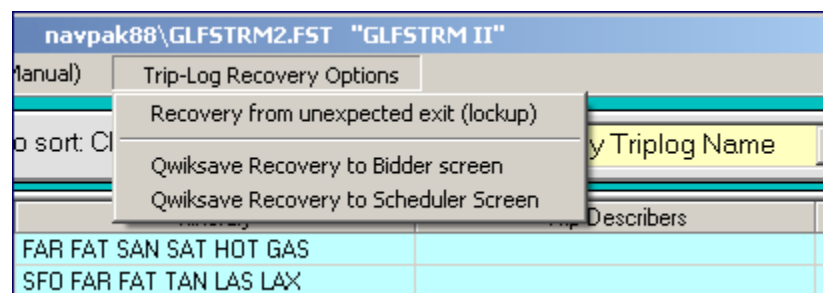
PASSENGER FLIGHT SCHEDULE - CITATION X - Aviation Department - Purpose: 1

Client: AUSLEY LAW FIRM	Printed: January 29, 2015 03:26 PM	Sched	
Captain: Affity, Ron	First: Cartwright, Frank	Thir	
Dates	Departure/Arrival Times	Departure/Arrival Cities	Airport
1. Fr: Sun 08-Mar-15 10:00 am Central DST	FARGO, ND (FAR)	HECT	
To: Sun 08-Mar-15 10:48 am Pacific DST	FRESNO, CA (FAT)	FRESI	

Please honor all **restrictions** on *passenger decorum* and interpersonal etiquette.
 This is a Passenger Leg Note.
 Catering by Baxter's.

WHAT'S NEW IN VERSION 27.0 OF THE NAVPAK DISPATCHER - 1st half of 2016

ENHANCED RECOVERY FROM UNEXPECTED EXIT - You can restore trip information from the *User-named Triplogs* screen by clicking on the **Select from User-named triplogs** button on the *Startup* screen, then clicking on **Trip-Log Recovery Options** in the Menu Bar at the top of the form. You will be able to send your restored trip to the Bidder or Scheduler. This feature can be especially valuable if you exit NAVPAK involuntarily. If you receive an error message and NAVPAK terminates before you have saved your trip, you may be able to recover it by using the Restore function. The likelihood of the restoration being successful is greater if the error that causes you to exit NAVPAK does not necessitate rebooting the computer. Even so, it is always a good idea to attempt to restore your trip if you are forced to exit NAVPAK in an abnormal way.



Trip recovery options in the Named Trip-logs screen

RECOVERY from Startup Screen: You may be able to recover some or all of your last trip, even if you had not performed a save before the previous exit. To activate this function, click on **File Options** on the Menu Bar at the top left of the Startup screen, or click on **Quick restore** in the Menu Bar. Then click on “Quick restore from unexpected exit”.

RECOVERY from Last 240 Triplogs: Click on **Restore QwikSaved trip** in the Menu Bar at the top of the form. You will be able to send your restored trip to the Bidder or Scheduler.

NOW YOU CAN MAKE A THUMBNAIL-SIZE ABBREVIATED BID. If you would like to print a version of your Bid that suppresses all charges except Total base charge, Adjustments, Subtotal of charges, Taxes, Total of charges, Prepaid Amount, and Final amount owed, you can click on “Display Options” in the Menu Bar at the top of the Bid form and click on “Show **ABBREVIATED Bid (Cost Estimate)**.”

If you click on “Yes (Abbreviate this time)”, this modification will be in effect so that you can print out the Bid to give to your customer. When you exit the Bid Preview screen and re-access it, the full spectrum of charges will be restored.

AIRPORT DISTANCE FROM CITY NOW AVAILABLE ON WAYPOINT ENTRY SCREEN

After entering waypoints on the Waypoint Entry grid, if you put the cursor on any of the waypoints on the grid, a pop-up overlay displays on the right-hand side of the screen. This overlay lists the Airport City, Airport area, Field Name, Runway length, Fuel available, Best approach, High Density fee, and now also “Distance from city”.

Property	Details
Airport City	GALLIPOLIS
Airport area	OHIO
Field Name	GALLIA-MEIGS RGNL
Runway length	3999' by 75'
Fuel available	Jet-A + Avgas
Best approach	GPS VOR
Hi Density fee	\$100
Distance from city	2 MILES NE OF CITY
doubleclick cell	to replace waypoint

LEGS CAN BE DESIGNATED PART-121 AS WELL AS PART-91 OR PART-135. FAA Regulations require the statement of whether individual legs are designated as Part 91, Part 135, or Part 121. NAVPAK accommodates this requirement by allowing you to automatically designate legs as Part 91, Part 135, or Part 121 on the *Waypoint Entry* screen. The designation is then displayed on the *Pilot Schedule* and *Pilot Schedule with Legnotes*. In order to facilitate the designation of trip legs as Part 91, Part 135, or Part 121, a column called *Part* displays on the *Waypoint entry* screen (column three). This column can be toggled with a click.

NAVPAK VERSION 27.0 INSTALLS THREE SPEED-USER ICONS INTO THE PROGRAM GROUP



Users are always looking for ways to reduce the number of clicks required to produce a trip sheet or cost estimate. One way to do that is to jump directly to Named Trips, Last-240 Trips or the Waypoint Entry Screen. These new short-cuts can be copied to the desktop for even easier access to NAVPAK. They can also be pinned to the Taskbar for fast startups.

WHAT'S NEW IN VERSION 27.0 OF THE NAVPAK DISPATCHER - 1st half of 2016

THE NAVPAK SQUIRT APP NOW INCLUDES A FOOTNOTES SECTION THAT PERMITS COMMENTS ABOUT A TRIP SHEET OR A COST ESTIMATE – Thanks to a customer suggestion, Squirt emails now provide adequate room to explain a cost estimate or trip-sheet as well as to identify the sender or recipient. Footnotes can be shorter or longer than a Tweet.

We are currently developing a method for automatically downloading Squirt Trip-Sheets and cost estimates into NAVPAK for storage or elaboration on the desktop. With downloading from the Cloud, a trip generated remotely can be completed at home base without re-typing. Even modifications to the performance file will be downloaded to the NAVPAK at home base.

NEW DATA IN SUPER SEARCH – New data sources have supplied more data to the Super Search database. The US added 188 new places. Canada added 84 new places. Mexico and Central America added 153 new places. Europe added 918 new places. The Pacific added 550 new places. Russia, Middle East and Far East added 231 new places. Africa added 218 new places.

AN AIRCRAFT'S MAXIMUM NUMBER OF SEATS HAS BEEN INCREASED FROM 99 TO 299 - NAVPAK permits charging a segment fee for the number of occupied seats per leg. The number of Passenger Seats per leg that are automatically reported on the Bidder screen can be set in the Performance File Builder. They can then be modified for individual trips on the Cost & Wind screen and the Bidder screen. The number of seats can range from 0 to 299. As before, seats departing from or arriving at a "rural" airport are not charged a segment fee.

NAVPAK Squirt MOBILE help

Airport Info for STA
 SANTA ROSA, CALIFORNIA
 4:12:53 Zulu 20:12:53 Local
 38.51° N 122.8133° W Best Appr: ILS
 Mag. Var. 16° E Elevation 128 feet
 Runway (L x W): 6000' x 150'

KAISERAIR SRJC (FBO Svcs)
 SONOMA JET CTR (FBO Svcs)
 AVIS (RentCars)
 BUDGET (RentCars)
 ENTERPRISE (RentCars)
 HERTZ (RentCars)
 NATIONAL (RentCars)

NAVPAK Squirt MOBILE help

KAISERAIR SRJC
 Tel: 707-528-7400 Location: NE
 Fuel: EPIC
 Hours: 0600-2100L; O/T O/C

100LL Self-Serve (Fueltype)
 24 Hour Emergency Service (AC Svcs)
 Aircraft Cleaning-Ext (AC Svcs)
 Airframe Repair (AC Svcs)
 American Express (Plastic)
 Ascend (Air Routing) (AV Cards)
 AVCard (AV Cards)
 Avfuel (AV Cards)
 Avgas 100LL (Fueltype)
 CAA Approved FBO (AC Svcs)

NAVPAK SQUIRT NOW INCLUDES AIRPORT AND FBO DETAILS – By January 2016 *Squirt for smart mobile devices* included an abbreviated version of NAVPAK's Airport and FBO Search. When an airport city name or identifier is entered, Squirt will display key details about the selected airport.

Clicking on the FBO Details button will provide a list of all of the services and amenities for that FBO or Handler, including a telephone number, fuel brands and fuel types, when that is available.

NAVPAK SQUIRT NOW HAS A HELP BUTTON ON EVERY SCREEN The Help button brings up a built-in users manual with descriptions of each of the Squirt pages. Whenever a question comes up, the users manual can be brought up to resolve uncertainties.

SQUIRT IS STILL FREE FOR CURRENT NAVPAK USERS - If you have a login name and a password, you will be able to use the new Squirt right away. Otherwise, contact the NAVPAK Support telephone line at 1-800-707-1011 or send an email to support@navpak.com. Squirt is the perfect mobile app for quick flight estimates and feasibilities.

